

# Gloved Fingertip & Thumb Sampling

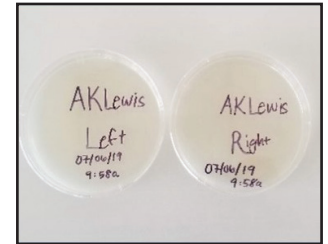
## Documentation of competence is required initially and again every 12 months

Initial competency requires completing the gloved fingertip and thumb sampling no fewer than 3 separate times. Each fingertip and thumb evaluation must occur after performing separate and complete hand hygiene and garbing procedures.

### 1. Prepare

You will need two sampling devices containing general microbial growth agar.

Label each sampling device with a personnel identifier, whether the sample is from the right or left hand, and the date and time of sampling.



### 2. Clean

Perform USP 797-mandated cleaning and disinfecting of the PEC or AECA, hand hygiene and garbing procedures.

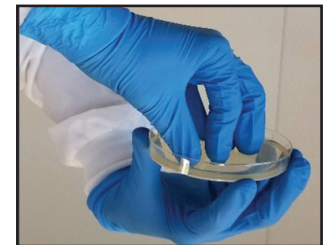
Do not apply 70% isopropyl alcohol (IPA) to gloves immediately before touching the sampling device. This could cause a false-negative result.



### 3. Collect

Hold the device with one hand. With the opposite hand, remove the lid. Bring the opposite hand up and roll all fingers and thumb over the agar surface.

Use a separate sampling device for each hand to collect samples from all gloved fingers and thumbs.



### 4. Incubate

Place the sampling devices in an incubator during two separate periods:

- 30°-35°C/86-95°F for no less than 48 hours, then
- 20°-25°C/68°-77°F for at least 5 additional days

Sampling devices should be inverted during incubation to prevent condensates from dropping onto the agar and affecting accuracy of colony-forming units.



### 5. Count

Count and record the total number of colony-forming units (CFUs) on both sampling devices after final incubation.

Total action levels required for passing:

Initial sampling: 0 CFUs

Subsequent samplings: <3 CFUs

Gloved Fingertip and Thumb Sampling: (3x)		Initial Evaluation	
Initial incubation 30-35°C: 48 hours	Start Date/Time 07/06 / 10:05 2019 am	After 7 days, CFU Count L	0
	End Date/Time 07/08 / 10:05 2019 am	CFU Count R	
Second incubation 20-25°C: 5 days	Start Date/Time 07/08 / 10:10 2019 am	Circle: 0 CFU = Pass >0 CFU = Fail	
	End Date/Time 07/13 / 10:10		